

THE GODLEY BEACON

The Godley Head Heritage Trust Newsletter No. 3, September 2003

From the Chairmans Desk

It is my pleasure to have guided the Godley Head Heritage Trust through its first year and to present its first annual report.

The most significant achievement has been to formulate and agree the Memorandum of Understanding with the Department of Conservation. This is the core document to the relationship between the Trust and the Department.

During the year the Trust has established an operational website promoting itself and Godley Head.

The process of gathering the documented and oral history of Godley Head is well in hand with over ninety two people who served at Godley Head either interviewed or yet to be interviewed.

Two highly productive working bees have been conducted and significant progress made in the restoration of the existing Godley Head buildings.

An exciting development has been the allocation of a significant sum by the government to the restoration of the existing buildings. Already lighting has been installed in two of the magazines.

One of the Trusts' core purposes is to preserve and restore the remaining Battery buildings. To this end we have established a Works Program Committee under the leadership of Graeme Hines,

that has assembled a list of tasks which the Trust intends to undertake. This list forms part of our commitment to the Memorandum of Understanding with the Department of Conservation.

Some of the tasks will be completed by individuals or small groups. Others by major working bees.

Each of these tasks will measureably contribute to the restoration and preservation of vital parts of New Zealand's heritage.

Our first year has been both involved and at times difficult. From this 'behind the scenes' effort has been formed a resilient organisation, with rewarding tasks to pursue and the structure and people to achieve it.

I am honoured to have been reelected Chairman for what promises to be an outstanding year in the Trusts' history.

**Kit Iversen
Chairman**

Contents

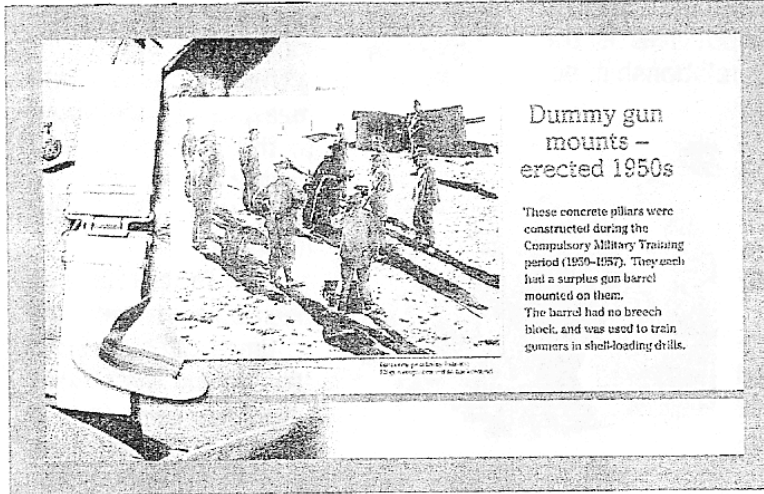
- 1 From the Chairman's Desk
- 2 Department of Conservation
- 3 The Web
- 4 & 5 Working Bee
- 6 & 7 Making a Plan



Department of Conservation *Te Papa Atawhai*

New interpretation panels will soon be seen out at Godley Head. Since the area was open to the public, there have been questions about what the concrete buildings were used for. Some visitors think the searchlight emplacements had guns in them, and many ask questions about what the desolate looking buildings actually

a background of images from WWII military uniforms. Sandra visited Graeme Hines, curator of militaria the Trust is collecting, and took photos of a dress uniform, belt and lemon squeezer hat. She used these as a link to tie the military panels together. The text and old photos were researched and put together by DOC staff and the Trust - and what a lot of research was involved.



For some places, like the miniature range, there are no old photos. We failed to unearth what the interior of this building looked like. An old film showed very blurry images of parts of the interior, and from these Peter Wilkins sketched what the range table looked like. Sandra took this sketch and produced

were. Apart from 'Eveready', some visitors don't know what a 'battery' is.

With the recent funding injection from the Government, panels have been produced for the: miniature range; battery plotting room; engine room; E2 gun emplacement; E2 magazine; E3 gun emplacement and magazine; radar; training gun mount; the 3.7 heavy AA gun; and a large panel giving an overview and map of the site. As well as the military information, panels have also been produced on the lighthouse and Maori history.

DOC's graphic designer, Sandra Parkkali, has done a great job, using

an excellent artists' impression that will help visitors better understand what went on in this room.

Old photos were dug out from Air Force archives, personal collections, National Archives and the Canterbury Museum. Each panel has a photo or sketch of what was at the site during its hey day, and what the purpose of the site was.

The panels will be installed by November this year. We hope for further funding to complete other panels for other sites next year.

Gnome Hannah-Brown
DOC

4WDNZ Website

4Wheeled Drive New Zealand is a useful and dynamic website organised by a retired field gunner Philip Moore, who saw service in Vietnam with 161 Battery. This web site covers 4WD vehicle activity, veteran military vehicles and weapons, with items on local military sites. Till recently 4WDNZ had a page on Godley Head. Philip has decided to close this page and refer viewers to the GH Trust's web site. We are extremely gratified by Philip's opinion of our website and look forward to an ongoing liaison with him over matters military. Please ensure you visit his web site at www.4wdnz.org

Your Website

Visit your own Trust website at either
homepages.paradise.net.nz/peterwil/godleyhead/index.html

or go to www.google.com and enter a search for "godley head"

The website is being constantly updated so visit regularly and tell a friend.

Second Trust Working Bee at Godley Head

GODLEY HEAD HERITAGE TRUSTS' THIRD WORKING BEE!!!!

At last the long awaited third chance to help rebuild Godley Head has arrived.

A working be is planned for Sunday the 28th of September 2003

We are going to complete our work on the Taylor Battery.

Meet at the Godley Head carpark 10am.

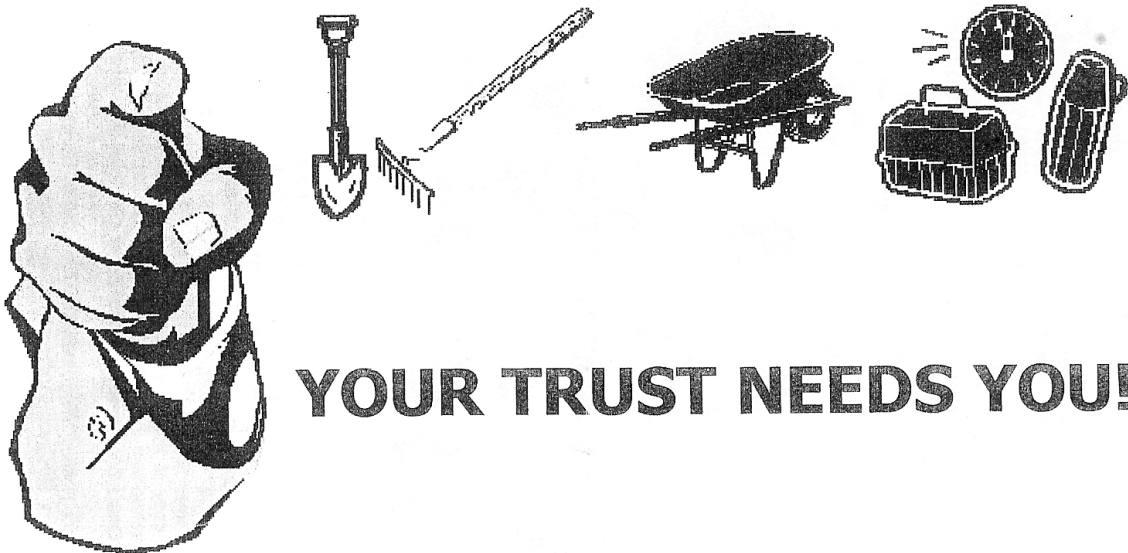
Please bring if you can, pickaxes, shovels, rakes, yard brooms, wheelbarrows, and anything else that may be of use.

Mark your tools to make sure you get them back.

Bring your lunch and a cup - tea, coffee, milk and hot water will be provided.

Dress for the weather.

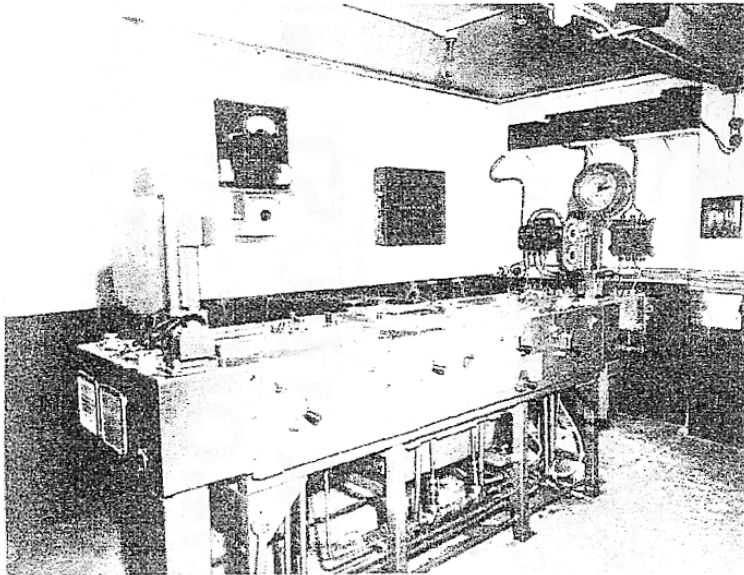
Cancellation will be on the radio, NewsTalkZB 1098AM at 8am.



YOUR TRUST NEEDS YOU!

Making A Plan

The Trust and DOC have cooperated on the research behind the new interpretation panels due to be installed at Godley Head (GH). Research however, is a moveable feast. Just when you're ready to sit down and eat, it moves; in other words there is no end to it. However there comes a time when you have to say this is the best we can prove, at present. This is what happened when a plan for the Battery Plotting Room (BPR)



Wartime photograph of Battery Plotting Table

of Godley Head was needed for one of the Interpretation Panels.

We had no plan of its layout just the bare room, one quality war time photograph of the plotting table, a short piece of film taken towards the end of CMT and a copy of the army's second war standardised plan for BPR's - taken from Peter Cook's book *Defending New Zealand*.

Sherlock Holmes being unavailable we had to try ourselves. Firstly the stand-

ard second war BPR plan was almost the identical size to our own plan of GH's BPR. This meant we could use the stylised fittings and people from that plan, in our own. This we drew in Photoshop and scanned in the standard plan as another layer.

Using the wartime photo, the CMT movie and existing marks on the building as a guide, we located the plotting table in the main room. In the film the commander's desk with him at it wasn't positioned but shown with daylight coming from the right. This located him by

one of the building's two windows. There wasn't room at the window end of the plotting table so his desk had to be located in a small room beside the eastern most window. This room is indicated by a few scragends of timber and marks on the walls. His desk was somewhat simpler in the film than the one in the wartime plan, but we took a bit of artistic licence and used the wartime drawing. There was room in there for his assistant

so reasoning he would have one we located a representative pair of figures in there.

Placing the operators around the plotting table was easy. They were in the plan and in the film. But then we noticed the co-ordinate converter table and its two operators in the wartime plan. Did GH have one? Back to the film. After watching it several times we spotted the table. It was there, but where? There wasn't room beside the plotting table and

certainly not in with the commander. The only option left was a small back room beside the commander's. We moved the table on the second war plan over our own plan and low, it fitted in the back room and so did its two operators.

This left three telephonists in the second war plan unaccounted for. One to airforce, one to Fire Command and one to Fortress. Firstly the airforce representative - he lived in BOP 1 with the Regiment's CO, who was also the Fortress Commander. That eliminated the need for two telephonists as the CO was linked to the Battery Commander (BC) not the Commander of the BPR. Next the one to Fire Command. Well the B.C. in BOP3 was in direct link with the Commander of the BPR who actually ordered the guns to fire on the BC's order, so third telephonist need eliminated. That's it! Every one accounted for and all equipment.

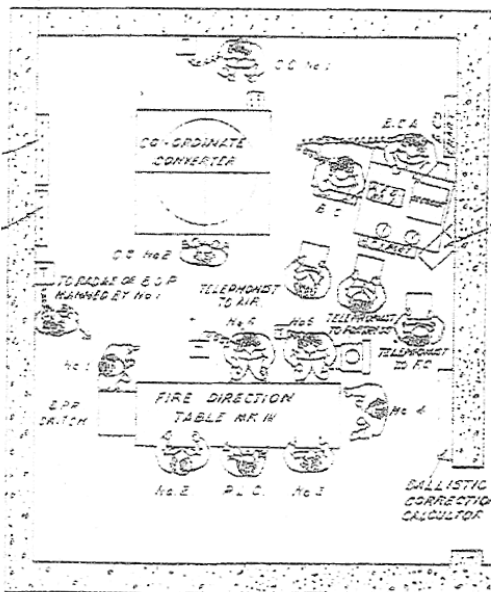
We have interviewed a number of people who were there in the BPR, both in

world war two and the CMT period and they simply can't really remember that much of what was there.

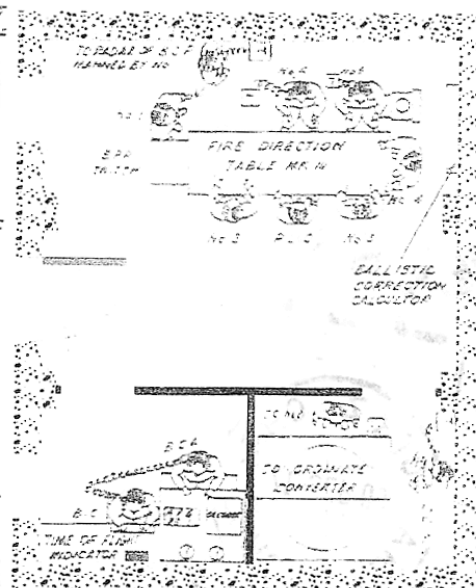
Are we correct? Generally, we probably are. Specifically we'll be wrong in some detail. The plan we have come up with is the best we can do with our existing knowledge. It is one thing in a chain of command we broadly understand, but not in detail. Our research goes on.

The information we seek could be derided as, as pointless as the medieval Christians trying to work out how many angels can dance on the head of a pin. If we do succeed in an accurate definition, then the facts are established, noted and research moves on. Too much history is based on convention, laziness and political necessity - not fact. If we establish the facts in our own tiny corner, then the history of our country will move forward minutely, but as it must, with integrity.

Peter C Wilkins
Trust Historian



General Staff guideline plan of Battery Plotting Room from Peter Cooks' book "Defending New Zealand"



The Trusts' interpretation of the Battery Plotting Room layout based on available data.